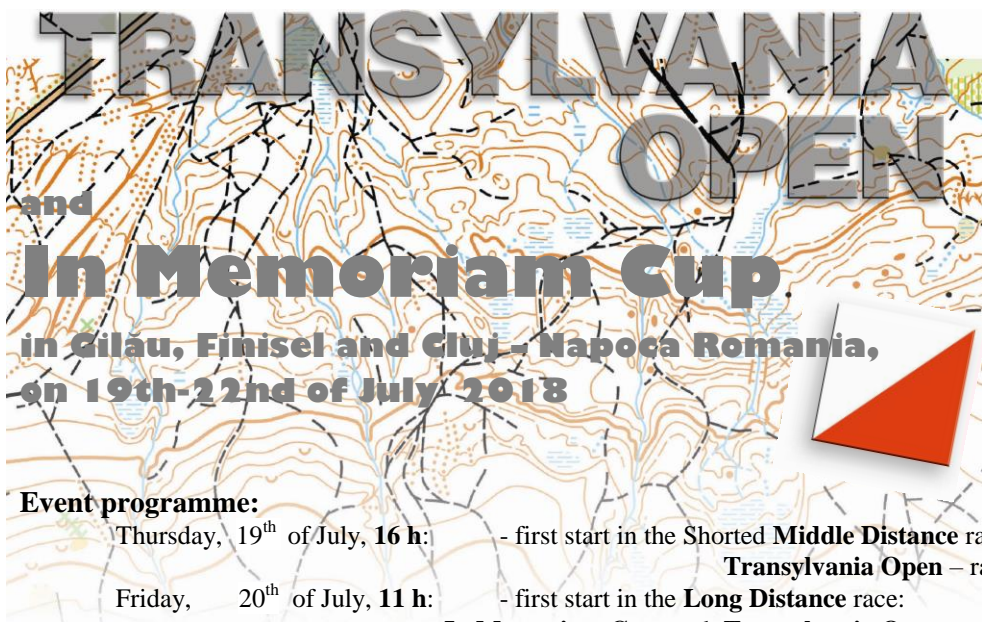


Romanian Orienteering Federation
Cluj County Youth and Sport Directorate
Pro Orientare Cluj and Transilva S.C.
Welcome you to



Event programme:

- Thursday, 19th of July, 16 h: - first start in the Shorted **Middle Distance** race:
Transylvania Open – race 1,
Friday, 20th of July, 11 h: - first start in the **Long Distance** race:
In Memoriam Cup and **Transylvania Open** – race 2,
Saturday, 21th of July, 10:30 h: - first start in the **Middle Distance** race:
Transylvania Open – race 3
Saturday, 21th of July, 13:30 h: - prize-giving ceremony **In Memoriam Cup**
Sunday, 22nd of July, 10 h: - first start in the **Middle Distance** race:
Transylvania Open – race 4.
Sunday, 22nd of July, 13:30 h: - prize-giving ceremony **Transylvania Open**



Event centre: Each day is situated close to the finish area. Distances, GPS coordinates appear at Technical Data. **Access to the events:** look at the map on www.transilva.ro.

Registration - event secretariat -Event Centre:

- Thursday, 19th of July, 14-15:30 h (Gilău - GPS 46.7449, 23.3788)
Friday, 20th of July, 09-10 h (Gilău - GPS 46.7486, 23.3656)
Saturday, 21th of July, 09-10 h (Finişel - GPS 46.6692, 23.4262)
Sunday, 22nd of July, 08-09 h (Făget - GPS 46.7251, 23.5653)

Attention!

- Users of Romanian National Roads must buy vignette called “Rovinieta”. Please visit www.roviniete.ro for more information. Crossing the Romanian state-border you can buy it at filling stations, via SMS (Orange, Vodafone Digi Mobil: call-number 7500) or online (www.roviniete.ro). In case of a passenger car the minimum period is 7 days and costs 3 EUR.
- On the **race 2: Bus and large minibus** will be parking in the Gilău Motel parking lot. **Cars** will follow the marking to the Event Centre (300m).
On the **race 3:** Acces road from asphalt to Event Centre (800m) is very narrow. For this reason **until 11 o'clock** acces road **will go only to Event Centre**. The **buses** will park on the paved road.

Terrain:

Hilly, many contour details; steep valleys, deciduous and coniferous forests, open lands; variable runnability and visibility.

Clothing for all races:

Due to high stinging nettle and other vegetation, whole body covered clothing is recommended. Protection against **ticks** and **mosquitoes** is recommended. Tick-borne Encephalitis vaccination is recommended.

Maps: Take care at the scale!

On the **race 1** the scale of the map is **1:5.000/5m**.

On the **race 2** the scale of the map is **1:10.000/5 m**.

On the **race 3** the scale of the map is **1:10.000/5 m**. **A part of the map is enlarged to 1:5000 scale.**

On the **race 4** the scale of the map is **1:10.000/5 m**, except categories **M10-M12, M60-M80+, W10-12, W55-W65+, Open** and **OPT-SH**. They have **1:7.500/5 m**. ISOM 2017 symbols are used.

Each day the maps are printed on waterproof paper. They have **A4** format. The **control descriptions** are printed on the map.

On the **race 2, M21E** have **2 maps** protected with **one plastic bag**, opened on the short side.

Additional control descriptions are available at start area.

Control system: The electronic SportIdent system is used. A backup needle punch is present at each control. The punch will be used in the reserve boxes on the map. This will be used if and only if the electronic device does not function (there is no beep and no flash). There is confetti at each control, in order to mark the place if the electronic device disappears.

Additional Marked routes:

There are **white-blue** (plastic) markings from the „Event center” (EC) to the „Start”.

There are **white-red** (plastic) marked routes from the "Finish" to „Event center”(EC). Distances appear at Technical Data.

The courses for the 10 years categories have **white-red** marked routes.

Warning for Race 1: Close to the Event Centre, the marked route from EC to Start (white-blue) intersects the marked route of MW10 category (white-red).

Refreshment points: only in the Event Centre. There are no refreshments at the „Start” area.
No buffet and no showers in the Event Centre area.

First aid: only in the Event Centre area.

Toilets: There will be toilets next to the **Event Centre areas**.

Start procedure: It is compulsory to wear the start-bib given by the organizer. The start-lists, optional A4 plastic bags and additional control descriptions will be available in the start area. The organizers don't provide materials for the competitors to fix the control descriptions. The organizers don't provide the transport of the clothes and bags from the "Start" to the "Event Centre" area.

Check-in to the Start: Competitors must check-in two minutes before their start time. There are consecutive start boxes. The runner reports oneself when the first box event's clock shows his start-time from the start-list. In the first box (1 minute) the organizer will verify the number of SI-card and the start-time, the runner makes the **CLEAR** and **CHECK** operations of the SI-card.

The **start time** is given by the **START** station device, when the competitor puts in his/her SI-card. The map is picked by the competitor after the **START**. The competitor is responsible for picking up the right map for his/her category. It is obligatory to follow the marked route to the start point which is indicated by a control flag on the terrain and by the triangle on the map.

Finish area: Introducing the SI-card in **FINISH** station is required.

Race 2+4: The **FINISH** station is not in the Event Center. Follow the white-red marked route to the Event Centre (150m/-20m Race 2, and 300m/15m Race 4).

SI-card reading is in Event Centre.

From the „Finish” to the officials' desk to download the SI-card, competitors will walk. Don't leave the officials' desk if there is any unresolved problem. Competition maps will be not collected after the races. Please, respect **FAIR PLAY!**

All runners are required to download the SI-card in Event Centre even if they did not finish the course, otherwise they will support the cost of seeking action.

Removing of controls begins at:

Race 1: **18:45**, Race 2: **15:00**, Race 3: **14:00**, Race 4: **13:30**

Prize-giving Ceremony in the **Finish area:**

Saturday, 21th of July, **13:30 h**

- For the first three placed runners in **In Memoriam Cup 2018 -ed. 18** (race2, Friday) - prizes from **Pro Orientare Cluj**.

Sunday, 22nd of July, **13:30 h:**

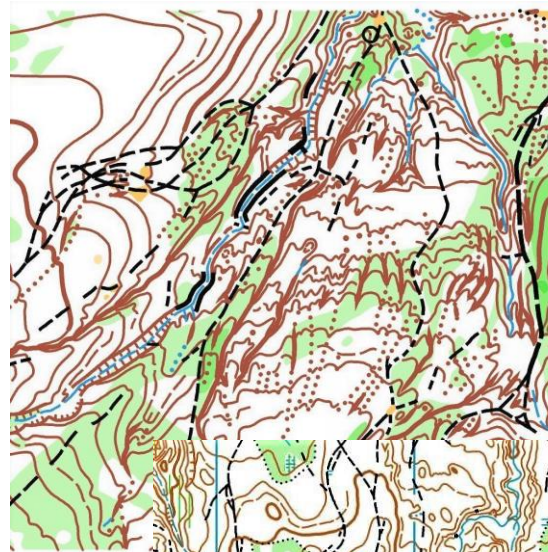
- For the first three placed runners in **Transylvania Open 2018 -ed. 17** (combined time results of 4 days) - prizes from **Transilva Sport Club**



Competitors take part in the competition on their own responsibility.

Medical insurance is the competitors' responsibility.

All competitors accept the rules and responsibilities specified in this Bulletin with their registration.



PRIMĂRIA ȘI CONSILIUL LOCAL
CLUJ-NAPOCA



— — — — —
The Heart of Transylvania

www.transilva.ro

www.orienteering.ro

www.fro.ro